

AGENDA

Meeting: PEWSEY AREA BOARD
Place: Woodborough Social Club, Smithy Lane, Woodborough, SN9 5PL
Date: Monday 16 March 2015
Time: 7.00 pm

Including the Parishes of Alton, Beechingstoke, Burbage, Buttermere, Charlton and Wilsford, Chirton and Connock, Easton, Grafton, Great Bedwyn, Ham, Little Bedwyn, Manningford, Marden, Milton Lilbourne, North Newnton, Patney, Pewsey, Rushall, Shalbourne, Stanton St Bernard, Upavon, Wilcot, Huish and Oare, Woodborough, Wootton Rivers

The Area Board welcomes and invites contributions from members of the public. The chairman will try to ensure that everyone who wishes to speak will have the opportunity to do so.

If you have any requirements that would make your attendance at the meeting easier, please contact your Democratic Services Officer.

Refreshments and networking opportunities will be available from 6:30pm.

Please direct any enquiries on this Agenda to Kevin Fielding (Democratic Services Officer), on 01249 706612 or email kevin.fielding@wiltshire.gov.uk
Or Caroline Brailey (Pewsey Community Area Manager) 01225 718609 or email caroline.brailey@wiltshire.gov.uk

All the papers connected with this meeting are available on the Council's website at www.wiltshire.gov.uk

Press enquiries to Communications on direct lines (01225) 713114 / 713115.

Wiltshire Councillors

Jerry Kunkler	Pewsey
Paul Oatway	Pewsey Vale
Stuart Wheeler	Burbage + Bedwyns

Map enclosed at page 1

Items to be considered		Time
1	Welcome and Introductions	5 mins
2	Apologies for Absence	
3	Minutes (<i>Pages 7 - 16</i>) To confirm the minutes of the meeting held on 12 January 2015.	
4	Declarations of Interest To receive any declarations of disclosable interests or dispensations granted by the Standards Committee.	
5	Chairman's Announcements (<i>Pages 17 - 24</i>) <ul style="list-style-type: none"> • Canal & River Trust seeking groups to adopt sections of the Kennet & Avon Canal. • Universal Credit. • Health and Care at Community Area Level. 	
6	Climate Local Initiative (<i>Pages 25 - 32</i>) Presentation From Ariane Crampton – Head of Service, Account Management, Wiltshire Council. To encourage the Pewsey community area to promote further public engagement on fuel poverty and carbon technologies.	15 mins
7	South Western Ambulance Trust To receive a presentation on the work of the Trust.	15 mins
8	Brighter Futures Radiotherapy Appeal (<i>Pages 33 - 34</i>) To launch the Brighter Futures Radiotherapy Appeal in the local area.	10 mins

9	<p>Legacy (Pages 35 - 42)</p> <p>Caroline Brailey – Pewsey Community Area Manager.</p> <p>To update the local community on activities since 2012 and plans for 2015.</p>	10 mins
10	<p>Pewsey Community Area Partnership - 2014 and beyond</p> <p>Susie Brew - Coordinator for the Pewsey Community Area Partnership (PCAP).</p> <p>To highlight what PCAP has achieved over the last year and what is planned for the future.</p>	10 mins
11	<p>Trans Wilts Community Interest Company</p> <p>An update from Susie Brew.</p>	5 mins
12	<p>Pewsey Local Youth Network (LYN) - update</p> <p>Karen Brown – Community Youth Officer, Wiltshire Council.</p>	5 mins
13	<p>Partner Updates (Pages 43 - 64)</p> <p>To receive any updates from partner organisations:</p> <ul style="list-style-type: none"> • Wiltshire Police • Wiltshire Fire and Rescue Service • Wiltshire Clinical Commissioning Group (CCG) • Health Watch Wiltshire • Pewsey Community Area Partnership • Parish Councils • Pewsey Area Campus Team • Army Rebasing 	20 mins
14	<p>Community Area Transport Group (CATG) - update and recommendations (Pages 65 - 70)</p>	5 mins

15 **Urgent Business**

5 mins

Time permitting, the Chairman will invite questions and comments on issues not covered elsewhere in the agenda.

16 **Future Meeting Dates and Close**

- Monday 11 May – Coronation Hall, East Grafton.
- Monday 6 July – Bouverie Hall, North Street, Pewsey.
- Monday 14 September – Woodborough Social Club, Smithy Lane, Woodborough.

This page is intentionally left blank

MINUTES

Meeting: PEWSEY AREA BOARD
Place: Woodborough Social Club, Smithy Lane, Pewsey SN9 5PL
Date: 12 January 2015
Start Time: 7.00 pm
Finish Time: 8.25 pm

Please direct any enquiries on these minutes to:

Kirsty Butcher (Senior Corporate Support Officer), Tel 01225 713948 or (e-mail) kirsty.butcher@wiltshire.gov.uk

Papers available on the Council's website at www.wiltshire.gov.uk

In Attendance:

Wiltshire Councillors

Cllr Jerry Kunkler (Chairman), Cllr Paul Oatway and Cllr Stuart Wheeler (Vice Chairman)

Wiltshire Council Officers

Caroline Brailey, Pewsey Community Area Manager
Ian Gibbons, Service Director Law and Governance
Peter Binley – Head of Highways Asset Management
Karen Brown – Community Youth Officer
Blaine Wood – Business Support Team Leader
Kirsty Butcher – Senior Corporate Support Officer

Parish Councils

Burbage Parish Council – Joyce Turner, Steve Colling, Richard Lewis
Charlton and Wilsford Parish Council – Richard Long
Easton Parish Council – Margaret Holden
Grafton Parish Council - Annie Whitcher
Manningford Parish Council – Bernard Gaskin
Marden Parish Council – Peter Bell
Pewsey Parish Council – Terry Eyles, Peter Deck, Alex Carder, Curly Haskell
Rushall Parish Council – Colin Gale, John Rogers
Stanton St Bernard Parish Council – Joyce Hayle, Wendy Tarver

Woodborough Parish Council – John Brewin

Partners

Wiltshire Police – Inspector Matt Armstrong

Wiltshire Fire and Rescue – Mike Franklin

Pewsey Community Area Partnership (PCAP) (and Huish and Wilcot PC) – Dawn
Wilson

OPCC – Clive Barker

Develop – Sian Wood

Total in attendance: 45

<u>Agenda Item No.</u>	<u>Summary of Issues Discussed and Decision</u>
1	<p><u>Welcome and Introductions</u></p> <p>The Chairman welcomed everyone to the meeting and introduced the Area Board Members and the Wiltshire Council officers.</p>
2	<p><u>Apologies for Absence</u></p> <p>Apologies for absence had been received from:</p> <p>Caroline Whistler – North Newton Parish Council Patrick Wilson – Vice Chairman PCAP</p>
3	<p><u>Minutes</u></p> <p>It was noted that Patrick Wilson's name appeared in error under Pewsey Parish Council and it was agreed that this should be removed.</p> <p>Decision The minutes of the meeting held on Monday 3 November 2014 were agreed as a correct record and signed by the Chairman, subject to the amendment detailed above.</p>
4	<p><u>Declarations of Interest</u></p> <p>There were no declarations of interest received.</p>
5	<p><u>Chairman's Announcements</u></p> <p>The Board noted two chairman announcements circulated at the meeting and attached to these minutes, in respect of:</p> <ul style="list-style-type: none"> • CCG Integrated Performance Management • Dementia in Wiltshire: The role of Healthwatch Wiltshire <p>The Chairman announced that Sian Wood from Develop would give a short presentation on the work of Develop under partner updates.</p>
6	<p><u>Wiltshire Police Precept Consultation - 2015-16 & Wiltshire Police - update</u></p> <p>Clive Barker, Chief Finance Officer from the Officer of the Police and Crime Commissioner, gave a presentation on the policing and crime element of the council tax consultation taking place in January and February of this year. The Commissioner has a legal duty to consult with the public</p>

Overall crime had been reduced by 3% from December 2013 – November 2014. Public confidence measured in the Spring / Summer survey was at 86.6% and victim satisfaction was at 87.7%; this is up to November 2014.

It was emphasised that HM Inspector of Constabulary had rated Wiltshire Police as Good in all categories, and that it is in line with national trends.

It was outlined that increases in costs in combination with a 5.1% cash grant reduction would result in an increasing budget spending gap in future years.

The Commissioner is consulting on a proposed increase to the police precept of 1.9%, or £3.06 per year. This was equivalent to 6p per week based on an average band D property. Even with this increase savings would still need to be made and it was intended that the force would work in partnership with councils and other police forces to deliver better services in single locations and single teams, purchasing and working smarter together.

Without the proposed increase the funding gap over the next 3 years is expected to amount to £13 million, but with the proposed increase it was forecasted at £11 million. This was after the level of savings already achieved had been taken into account.

The Area Board discussed the proposals and were advised that the consultation period is running from the 6th January to the 4th February. All were invited to read more about the proposal and give feedback via the Commissioner's website - www.wiltshire-pcc.gov.uk

Questions raised included:

If there would be a shortfall what were the police not going to do?

- a. *The OPCC is trying to protect frontline services where possible. It was hoped that savings would be made through reviewing the structure of the force and by working regionally in force partnerships.*

Could you come back with another rise in 2016/2017?

- a. *The forecast of £11 million was based on continuing to increase the police precept by 1.9% over the next three years.*

Inspector Matt Armstrong followed Clive Barker and gave a verbal police update. He stated their resolution was to be more visible, and explained that performance was good overall. An increase in violence against the person had been seen, with 10 additional offences seen compared to last year. Officers were working hard with individuals and it was hoped that this would turn into a decrease.

Significant arrests had been made in relation to beauty spot thefts which had resulted in imprisonment and numbers had decreased on last year.

There was still an issue with burglaries targeting tools in both dwellings and non-

	<p> dwellings, and also targeting dogs.</p> <p> Officers had been working closely with colleagues in Hampshire, with both intelligence and officers shared in a series of events. In November the team completed an exercise with Marlborough PCT, during which 83 vehicles were stopped. 22 fixed penalty notices were issued and one vehicle was seized after being found to have no insurance.</p> <p> Officers were still working on traffic related matters around Woodborough school and anti-social behaviour in the vicinity of the co-op.</p> <p> Questions raised were:</p> <p> Can patrols be stepped up in areas, as night patrols might put off vandalism? <i>a. We do patrol – if more resources are needed they can be called in</i></p> <p> Non-dwelling burglaries of tools in the Bedwyn area – how do we stop? Is it one or two people? Is it opportunistic? <i>a. In the Burbage area there had been 8 offences in 2 months, targeting heavy work tools. Analytical work was needed, and inroads were being made but we need intelligence – please contact us if you have information.</i></p> <p> It was noted that the Area Board were very pleased and lucky to have an excellent team.</p> <p> The Chairman thanked Clive and Matt for attending.</p>
7	<p><u>Local Youth Network (LYN) Report</u></p> <p> Karen Brown, Community Youth Officer, discussed the work that the LYN has been doing within the community and their forward plan.</p> <p> They were currently working with a company called B8 from Swindon on a Pewsey media mash-up, working on an animation around road safety. Another taster day was due to be held on the 5th February, with further workshops being held throughout February and March on Thursday evenings in Pewsey. Monthly Saturday sessions would continue thanks to Simon Shaw and Pewsey Parish Council.</p> <p> On the 22nd January Moonrakers will be hosting ‘The Zone’ from 8pm-10pm. Pewsey Youth Club will be on Friday evenings from 6 February run by Holly Hillier and funded by Aster Communities.</p> <p> At its meeting on 15 December 2014 the LYN proposed to bring an ice skating rink to Pewsey to provide a positive activity for young people, promote the youth network and provide an exciting community engagement event for young people and families.</p>

	<p>Karen explained that the 14th February had been identified as the possible date. The event will run from the afternoon into the evening, and a 10m by 10m rink would be located outside the Co-Op, with additional activities available. Pewsey Parish Council were happy to support the event and had agreed to contribute £100.</p> <p>The Board was asked to approve the proposal for the community initiative involving the ice skating rink and to approve the budget of £1000+VAT with transport costs of £60. In response to a question it was confirmed that if approved the money would come out of the youth budget.</p> <p>Decision</p> <ul style="list-style-type: none"> • Pewsey Area Board approved the proposal for the community initiative involving the ice skating rink • Pewsey Area Board approved the budget of £1000+VAT and transport costs of £60 to enable the booking of said event <p>The Chairman thanked Karen for attending.</p>
8	<p><u>Local Highways Investment Fund - 2015/16</u></p> <p>Peter Binley, Head of Highways Asset Management discussed the 6 year programme of investment fund in highways maintenance which started in 2014/15.</p> <p>Roads in the worst condition will be targeted by the investment and include minor roads as well as main roads. The standard timeframe for resurfacing roads was every 7 months; however recently, this had been every 10 months. The council had confirmed that highways are a priority and with a budget of £21million for highways maintenance per year and an additional £3million for bridge maintenance, this 6 year programme aims to significantly improve the roads and highways within Wiltshire.</p> <p>The Board was asked to note the progress being made on implementing road resurfacing and safety schemes in 2014/15 as detailed in Appendix 1 and 2 to the report; to consider the proposed highway maintenance schemes in the community area for 2015/16 detailed in Appendix 3 to the report and agree the list for implementation, and to suggest any sites for consideration for inclusion in future year's highways maintenance and resurfacing programmes.</p> <p>It was important to know as soon as possible as it could take up to 3 months to get road closure orders.</p> <p>Some questions raised were:</p>

	<p>With regard to the timescale for getting road closures, was it possible to get emergency notifications within a week</p> <p>a. <i>The aim was for a managed programme across the year.</i></p> <p>Will The Crescent, Broadfields definitely be done?</p> <p>a. <i>If it was pushed back it would be done as soon as possible</i></p> <p>What is the difference between surfacing and surface dressing?</p> <p>a. <i>Surface dressing is when tar is laid down and chippings embedded using a roller, commonly used on rural roads. Resurfacing is replacing the entire road surface using black asphalt, commonly on main roads.</i></p> <p>The Area Board discussed the proposals, with some concern around priorities however after further discussion and consultation with the CATG members, the Chair confirmed that this should be agreed in the meeting to avoid any delay.</p> <p>It was noted that if any of the Parish Councils have specific roads they would like to be done this could be fed back to Peter Binley's team through the CATG.</p> <p>Decision</p> <ul style="list-style-type: none"> • Pewsey Area Board noted the progress made on implementing road resurfacing and safety schemes in 2014/15 • Pewsey Area Board approved the list of proposed highway maintenance schemes in the community area for 2015/16, as seen in appendix 3 to the report, for implementation • Any sites for inclusion in future year's highways maintenance and resurfacing programmes would be suggested through the CATG <p>The Chairman thanked Peter for attending.</p>
9	<p><u>Nomination of Crown & Anchor Public House, Ham as an Asset of Community Value</u></p> <p>The Area Board was asked to consider the nomination of the Crown and Anchor Public House to become an asset of community value. It was noted that it was the only pub in Ham and was strategically located on the village green.</p> <p>When asked how to nominate for assets of community value it was agreed that Caroline would circulate further information.</p> <p>Action – Caroline Brailey</p> <p>Decision</p> <p>Pewsey Area Board agreed to support the nomination of Crown and</p>

	<p>Anchor Public House, Ham as an asset of community value.</p> <p>Further information regarding the community right to bid for assets of community value can be found via the link below:</p> <p>http://www.wiltshire.gov.uk/planninganddevelopment/planningcommunityrighttobid.htm</p>
10	<p><u>Partner Updates</u></p> <p>The following partner updates were given:</p> <p>(a) Wiltshire Police</p> <p>The verbal update provided by Inspector Matt Armstrong was reported under item 6 – Wiltshire Police Precept Consultation.</p> <p>(b) Wiltshire Fire and Rescue</p> <p>Mike Franklin circulated a written report which is attached to these minutes. Recruitment of firefighters in Pewsey is moving forward; there are new recruits at various stages of training. In November, Wiltshire Fire and Rescue agreed a proposal to merge with Dorset Fire and Rescue and there was currently an open government consultation on this proposal. PCAP had been approached with a proposal to buy equipment to enable fire safety advice to be targeted at canal boat users and dwellers.</p> <p>(c) Wiltshire Clinical Commissioning Group</p> <p>No update received.</p> <p>(d) Pewsey Community Area Partnership</p> <p>Susie Brew, Coordinator of the Pewsey Community Area Partnership (PCAP) drew attention to the update contained at page 29 of the agenda.</p> <p>The next meeting of the PCAP is to be held on the 30 April and not 26 February as stated in the written update. Attention was drawn to the Pewsey Vale Tourism Partnership with a meeting held on the 17th December to kick things off.</p> <p>The bus consultation finished on 10 December but results were not yet known. A working group would be convened to look at the consultation results when available.</p> <p>The Network Rail train consultation is due to close on 9 January – PCAP had submitted a response.</p>

(e) Parish Councils

No updates received.

(f) Pewsey Area Campus Team

The Vale Community Campus was launched on 15 September 2014. Plans have been submitted and will be determined by 5 February 2015. There had been 8 expressions of interest received from contractors but two did not fulfil the criteria. Tender documents were sent to 6 bidders and are due to be returned by the end of April 2015, with an appointment made around May/June 2015. The leisure centre was still open.

All were reminded that the old tennis courts behind Pewsey Vale Academy were now a multi-use games arena and those wishing to use this facility could register their interest at the leisure centre.

The campus team's priority was communication and they offered to attend parish meetings where wanted and possible. They are also working on back up facilities for the leisure centre for when it is closed for building the new campus.

(g) Good Neighbour Scheme

Mary Soellner has left and we are awaiting her replacement.

(g) Army Rebasing

The project was moving on with well prepared plans on estate design. A delay in Larkhill was due to work on the A363. More would be known about Upavon in 2015. Traffic concerns about the A345 and A342 had been emailed on and a response would be provided to the enquirer.

(h) Develop

Sian Woods gave a presentation on Develop and how the service can support and work with the local area. They provide support to non-profit organisations in Wiltshire. They can supply support to individuals or groups, and also advise on equalities and funding. They run training in areas such as social media, first aid, mentoring, measuring impact, food safety and marketing and offer networking opportunities and events for the sector. They also run Volunteer Centre Wiltshire which offers help and information to support and maintain volunteering opportunities.

The Chairman thanked Sian for attending.

11	<u>Urgent Business</u> There was no urgent business.
12	<u>Future Meeting Dates</u> The next meeting of the Pewsey Area Board is scheduled for Monday 16 March 2015 at Pewsey Vale School The Chairman thanked everyone for attending.
13	<u>Close</u>

Agenda Item 5

Chairman's Announcements

q

Subject:	Canal & River Trust seeking groups to adopt sections of the Kennet & Avon Canal
Officer Contact Details:	Ken Oliver Countryside Officer 01249 706494 ken.oliver@wiltshire.gov.uk
Further details available:	https://canalrivertrust.org.uk/volunteer/adopt-a-stretch-of-canal-or-river-near-you

Summary of announcement:

The Kennet & Avon Canal plays an important role in Wiltshire life and in partnership with Wiltshire Council, the Canal & River Trust is seeking volunteer groups to 'adopt' sections of the waterway. The aim is to help keep the canal in good order and to make improvements that will benefit all users and the wildlife habitat.

The CRT are wanting to widen their community engagement and are offering adoptions as a way of enabling local communities to help care for their stretch of the waterway. Adoptions are supported by the volunteer coordinator team within the CRT. They will assist with equipment, activities, training and health and safety matters

The commitment would typically be one day per month for 12 months.

Countryside Officer Ken Oliver works with the Kennet & Avon Waterways Partnership and would be pleased to provide more details

Tel : 01249 706494

Email: ken.oliver@wiltshire.gov.uk

This page is intentionally left blank

Chairman's Announcements

Subject:	Universal Credit – background and update on steps to roll out the scheme
Officer Contact Details:	Ian P Brown, Revenue & Benefits Direct Line: (01225) 716701
Further details available:	Ian P Brown

Summary of announcement:

Universal Credit will begin in Wiltshire on 16 March 2015, following an announcement by the Wessex branch of the Department of Work and Pensions (DWP)

Many people on benefits believe that the financial risks of moving into work are too great. For some, the gains from work, particularly if they work part-time, are small, and any gain can easily be cancelled out by costs such as transport.

The government believes that:

- the current benefit system is too complex
- there are insufficient incentives to encourage people on benefits to start paid work or increase their hours

Through Universal Credit the government is aiming to:

- make the benefit system fairer and more affordable
- reduce poverty, worklessness and welfare dependency
- reduce levels of fraud and error

The intention of reforming the welfare system is to help more people to move into and progress in work, while supporting the most vulnerable.

Universal Credit (UC) is the latest national welfare benefit which will eventually replace six other benefits provided by the DWP and HMRC. UC will eventually replace Income Support, Income Based Job Seekers Allowance, Income based Employment Support Allowance, Child Tax Credit, Working Tax Credit and Housing Benefit.

Claimants will always be encouraged to apply on line and report any change in circumstance, on line. The completed claim will not be processed locally but in a Service Centre in either Glasgow or Bolton. (A slide set entitled UC Welcome Pack is attached)

It is important to note that in this initial phase, which runs from 16 March 2015 to May 2016, only single, unemployed people will qualify for UC. Couples, families with children and those in work but entitled to any of the benefits listed above, will either be transferred or asked to apply for UC from May 2016 onwards. Based on the qualifying criteria it is estimated 3,000 residents could qualify for UC in Wiltshire 2015-16. Every UC award will be paid monthly, in arrears, and claimants will receive their payment direct, approximately five weeks after the claim is registered.

Some support will be available to those who either struggle with the delay in payment, through an advanced payment made by the DWP, which will then be recovered from on-going payments. When rent is not paid on time a landlord can apply to the DWP for an alternative payment arrangement (known as an APA).

Whilst support in terms of budgeting will be made available through the council, management of complex debt may require referral to agencies better equipped, in this case the Citizens Advice Bureau. The council's role will be to ensure that residents are supported in the initial stages of their claim and:

- To provide access to computers,

Chairman's Announcements

- Assistance to get on line and apply on line
- Budgeting support and money advice
- Supporting vulnerable claimants and providing access to discretionary funds and local welfare provision.

A great deal of work has already taken place to provide agencies with information about the transition to universal credit. The DWP and the council have spent considerable time in negotiations to develop a Delivery Partnership Agreement which includes a framework for payment to meet aspects of our service delivery. Wiltshire is therefore well placed to be one of the first local authorities in the west to support the roll out of universal credit and set out below is some of the preparatory work.

- The Wiltshire Online project and the provision of 180 new computers in our libraries.
- The council's corporate research team produced an extensive report entitled Universal Credit: analysis of risk.
- Joint working between the DWP and librarians in conjunction with other voluntary groups to support people to access information and apply for benefits online.
- Undertaken a project to replace the current paper based housing benefit application form with a web based E-form.
- The provision of training through children's centres to stakeholders and voluntary sector in conjunction with Wiltshire Money.
- The involvement of Wiltshire staff working with the DWP at the highest level in terms of project planning and attendance at Technical Working Groups in London.
- A track record of delivering change, particularly welfare reforms, through partnership working across Wiltshire.
- Robust and carefully managed discretionary schemes (Local welfare provision, Discretionary Housing Payments and the latest discretionary council tax reduction) that can be used to support those in the most difficult financial circumstances

There are details on the next page of the eligibility criteria and details of the information claimants will need to make a claim online.

For further information about any of the research papers or details regarding any of the projects above please contact either Ian P Brown, Head of Revenues and Benefits, Julie Higinbotham, Benefits Manager at Wiltshire Council or Jackie Tuckett, Partnership Manager at the DWP.

There is extensive information made available on the government's own [website](#).

Universal Credit Expansion Eligibility

Claimants must:

- Be single.
- Must have a National Insurance Number.
- Be aged between 18 and 60 and six months.
- Not own or partially own the home they live in.

Chairman's Announcements

- Not be homeless or live in support or exempt accommodation.
- Not live in the same household as a member of the regular or reserved army who is absent from home on duty.
- Be a British citizen, resident in the United Kingdom (UK) for the last two years (not absent outside the UK during those two years for four weeks or more).
- Not have a child or qualifying young person (QYP) living with them some or all of the time.
- Not be an adopter with whom a child is expected to be placed within the first two months of the UC claim or a foster parent.
- Not be liable to pay child support maintenance.
- Not be responsible for providing care to a person with physical or mental impairment, unless on a paid or voluntary work basis.
- Must not have a fitness for work note or applied for a fitness for work note. Claimant must declare themselves fit for work.
- Must not be considered as having limited capability for work.
- Not be pregnant, or have been pregnant in the last 15 weeks.
- Not require a person acting on their behalf e.g. Personal Acting Body (PAB) or Corporate Acting Body (CAB).
- Not be in education or training of any kind.
- Not be self-employed.
- Not be a company director or part of a limited liability partnership.
- Be unemployed or declared earned income for the first month of the UC claim is not expected to exceed £330.
- Capital must not exceed £6000.
- Must have a bank, building society, post office or current account with a credit union.
- Must not be entitled to old rules Employment and Support Allowance (ESA), old rules Jobseekers Allowance (JSA), Income Support (IS), Incapacity Benefit (IB), Severe Disablement Allowance (SDA) , Disability Living Allowance (DLA), OR Personal Independence Payment (PIP).
- Must not be awaiting a decision on a claim for old rules ESA, old rules JSA, IS, Child Tax Credit (CTC), Working Tax Credit (WTC) or Housing Benefit (HB).
- Must not be awaiting the outcome of an application to revise a decision of non-entitlement to old rules ESA, old rules JSA, IS and HB.
- Must not have an undecided appeal against non-entitlement to old rules ESA, old rules JSA and IS.

This page is intentionally left blank

Chairman's Announcements

Subject:	Health and Care at Community Area Level
Officer Contact Details:	James Cawley Associate Director - Adult Care Commissioning, Safeguarding and Housing James.cawley@wiltshire.gov.uk
Weblink:	
Further details available:	

Summary of announcement:

Wiltshire Council is working with the CCG about delivering services locally to local people. The Council and CCG commission and deliver services for older people and currently area boards have no involvement and there are proposals to change this.

A presentation will be made at the next Pewsey Area Board on 11 May. Market position statements will be available together with details of an information and advice portal which will be accessible in libraries and the internet. There will be an opportunity to look at these prior to the meeting

There will be a 5 minute overview of key issues followed by interactive session to discuss the key services required to support older people at a local level.

This will include an explanation of existing services, including Good Neighbourhood schemes and Day/ lunch clubs. An opportunity will exist to allow area boards to work with local providers of the above service.

Area Boards can consider appointing :-

Older peoples champions

Carers champions

There may be some money to support these possible two appointments

CCG/GPs to be invited to the area board meeting and to discuss with smaller groups as part of interactive session, the role of the integrated healthcare/neighbourhood team development

The purpose is:-

- To engage local communities in identifying support services.
- To establish small working group of local people and representatives of integrated team to work with Community Area Manager and the to be appointed Older people and Carers champions.
- To establish an evidence base for any development of new services which must be locally driven.

It is intended that this group will work with or form part of existing health and social care groups that sit under the Partnerships.

This page is intentionally left blank

WILTSHIRE COUNCIL

PEWSEY AREA BOARD
16th March 2015

**IS YOUR COMMUNITY READY TO TACKLE THE WILTSHIRE
ENERGY CHALLENGE?**

Purpose of Report

1. To raise awareness and engage the Pewsey community in how the council is tackling the energy challenge.

Relevance to the Council's Business Plan

2. Reducing carbon emissions and preparing for unavoidable climate change addresses two of the council's priorities:
 - (i) To protect those who are most vulnerable - through reducing fuel poverty and ensuring communities are prepared for the impacts of climate change.
 - (ii) To boost the local economy - through stimulating green jobs locally.
3. The council's Business Plan commits the council to reducing its carbon footprint and increasing recycling (p18). The Plan (Outcome 3) also aspires to:
 - reducing fuel poverty in the county;
 - lowering the carbon footprint of households, businesses and public services through energy efficient buildings and renewable technology;
 - promoting sustainable transport;
 - supporting people and places to deal with unavoidable climate impacts, such as flooding.

Background

Cabinet report

4. In September 2014, Wiltshire Council became a signatory to the Local Government Association's Climate Local initiative, which replaced the Nottingham Declaration on climate change. The significant progress made to tackle fuel poverty and promote low carbon technologies was noted at this time and Cabinet requested that further public engagement on this matter be sought through the area boards. The council's Climate Local [action plan](#) has since been published on the council website.

Climate Local

5. By signing up to [Climate Local](#), councils across the country are capturing the opportunities and benefits of action on a changing climate, through leading by example, saving on their energy bills, generating income from renewable energy, attracting new jobs and investment, reducing flood risks and managing the impacts of extreme weather. 92 councils have signed up to date.
6. Wiltshire Council has been taking action on climate change since 2009 and continues to drive down carbon emissions across the county. The Climate Local initiative provides a mechanism for communicating and recognising these achievements.
7. According to government data, Wiltshire's per capita carbon emissions have fallen from 8 tonnes of carbon dioxide (tCO₂) in 2005 to 6.7 tCO₂ in 2012. This reflects a reduction in emissions nationally, but remains higher than the 2012 South West average of 6.1tCO₂ and national average of 6.2 tCO₂. The higher figure for Wiltshire is entirely attributable to higher transport emissions, as domestic and industry emissions match the national and regional averages. This cannot be explained by emissions from the M4 motorway or diesel railways. They are excluded from these figures as deemed to be outside the scope of local authority influence.

Main Considerations for the Council

Achievements

8. The council aims to reduce its annual carbon footprint by 11,823 tCO₂ by March 2017 compared with its 2010/11 footprint. In February 2014, the council's second [Carbon Management Plan](#) was published, showing significant progress in reducing the council's carbon footprint and generating annual savings on energy bills. The energy consumption data for 2013/14 shows further progress.
9. A review of progress and up-to-date consumption data were set out in the [Appendices](#) to the 16 September 2014 Cabinet report. Highlights include:
 - 661 planning applications for renewable technologies were received, of which 93% were approved.
 - The council facilitated the insulation of 1,430 homes across Wiltshire using £0.5 million invested by energy companies.
 - The council has attracted a further £1.4 million external funding for carbon reduction projects plus a £0.6 million 0% loan.
 - 112 invest to save energy efficiency projects have been implemented at a cost of £4.1 million, saving 2,475 tonnes of CO₂ and £730,000 on council energy bills annually (includes 2014/15 projects).
 - The council has set up an Energy Management System certified to ISO50001 standard.
 - Business mileage emissions were reduced by a third in 2013/14 from 2010/11 peak.
 - Over thirty schools have engaged in programmes to reduce their energy costs and carbon emissions.

- The Wiltshire Core Strategy includes specific policies around renewable energy and sustainable construction.
- Installation of biomass boilers at twelve schools and one campus, generating income from the sale of heat and the government's renewable heat incentive, while saving on schools' running costs.
- Installation of the largest single-roof local authority-owned solar panel system in the UK on the new Northacre Resource Recovery Centre in Westbury, covering an area equivalent to seven tennis courts.
- Installation of 2,500 high efficiency boilers in council housing by 2018.

More information about council carbon reduction projects and environmental community activity in the Pewsey community area is included at **Appendix 1**.

Next steps

10. The council's ECO Strategy (2011) sets out the development of four action plans:
 - A Carbon Management plan for the council
 - A Climate Change Adaptation plan for the council
 - A Renewable Energy Action plan for the county
 - A Low Carbon Transition plan for the county
11. It was agreed by the ECO board in 2012 to streamline the number of action plans by developing a single Energy Resilience Plan for aspects relating to renewable energy, the low carbon transition and affordable warmth in Wiltshire as a whole. The aim of this new plan to be developed in 2015 is to cover all aspects of making Wiltshire a more self-sufficient county when it comes to meeting its energy requirements.
12. There are to be four main themes running through the plan:

• Sustainable transport	• Renewable energy
• Energy efficiency	• Affordable warmth
13. The development of the Energy Resilience plan provides the opportunity to work with large businesses, communities and public bodies to capture existing initiatives to drive down energy demand in the county and identify future opportunities. The council's Green Economy Team are speaking to large energy consumers in Wiltshire to find out what plans they have in place to reduce their energy costs, and to the energy sector and community energy groups who want to invest in new technologies to deliver clean energy more locally. Through this process we are identifying where there are opportunities for energy resilience in Wiltshire and the actions necessary to see these come to fruition.
14. The plan will set out how we and others in the county are working to make our energy use more secure, affordable and sustainable. Behind much of this work is the drive to reduce energy waste and our dependence on fossil fuels. Through the development of the plan we can explore the opportunities for Wiltshire securing a low carbon future linked with long-term sustainable growth. We can understand how homes, buildings and industry can become

more energy efficient and match demand for energy through a varied mix of renewable and low carbon technologies. We will be able to identify opportunities for affordable low emission vehicles and efficient alternatives to the car. The energy resilience plan will identify a network of local businesses which are able to create new jobs and skills to emerge through a thriving low carbon economy.

15. The plan's broad objectives will include: reducing carbon emissions across all sectors; maximising economic opportunities; encouraging local energy generation and low carbon infrastructure; and enabling an active role for communities.

Environmental Impact of the Proposals

16. Reducing the council's environmental impact is the subject of this report.

Financial Implications

17. By taking actions to reduce energy use, the council stands to make significant savings given that total energy and transport costs for the council were £13.6 million in 2013/14, including £0.4 million for costs relating to the Carbon Reduction Commitment (CRC).
18. Total spend on energy and transport costs (excluding CRC) was approximately £13 million in 2009/10 and £12 million per year for the subsequent three financial years. Over the period 2009/10 to 2013/14, the unit prices paid by the council for gas have increased by 50% and electricity by 8%. This shows the importance of reducing consumption to avoid large increases in bills.
19. The council has spent £4.1 million on energy efficiency and renewable energy projects since 2009 (including 2014/15 projects). These are projected to generate £0.73 million savings per year, paying back in less than six years on average.
20. In addition, the council is investing in an oil to biomass conversion programme across twelve schools at a cost of £2.7 million. Projected income to the council from the renewable heat incentive for schools and campuses using biomass boilers comes to circa £4 million over 20 years.
21. The council has succeeded in obtaining £1.4 million external funding for carbon reduction projects (including £0.4 million for electric vehicle charging points) plus a £0.6 million 0% loan for energy efficiency investments.
22. The CRC scheme cost for 2013/14 came to £0.42 million, of which schools paid £0.16 million. Costs for 2014/15 and beyond are projected to be £0.5 million per annum which will need to be borne corporately as schools are no longer included in the CRC scheme.

23. Under the CRC scheme, the cost has risen from £12 per tonne at the start of the scheme to £16.10 per tonne in 2015/16. It is expected that this will continue to rise in line with the Retail Price Index (RPI) year on year.
24. Any further financial implications identified through the Energy Resilience Plan will be addressed through the ECO board.

Legal Implications

25. There are no specific legal implications stemming from this voluntary initiative. However, addressing climate change is a key requirement for local authorities, as set out in the Climate Change Act 2008. Further information on the council's responsibilities relating to Climate Change and to the legislative and policy framework can be found in the [report](#) to Cabinet dated 22 June 2010 (Agenda Item 103). In addition, since that date, the Energy Act 2011 has been enacted which sets out the legal framework for the Green Deal, as well as the CRC Energy Efficiency Scheme Order 2013 which sets out revisions to the CRC scheme.

Equality and Diversity Implications

26. The council's work to promote insulation schemes has focused particularly on vulnerable households as they are most at risk of fuel poverty. For example, project ACHIEVE trained up unemployed young people to deliver energy saving advice and devices to vulnerable households.

Recommendation

27. That the Area Board notes the progress the council has made in tackling the local energy challenge and in particular the initiatives in the Pewsey community area outlined at **Appendix 1**.

Report Author: Clare Langdon – Manager: Green Economy Team
Tel No: 01225 713867
E-mail: clare.langdon@wiltshire.gov.uk

Appendices:

- Appendix 1 Overview of council carbon reduction projects and community activity in the Pewsey community area

This page is intentionally left blank

Appendix 1

Energy Saving Projects in the Pewsey community area

The following are examples of energy projects in the Pewsey community area. The Carbon Management Plan has enabled investment across the county in a range of projects on the council's own buildings and estate. As part of this large programme the following 'invest to save' projects have been implemented.

Invest to save projects

Pewsey Sports Centre – pool pump

Up to 65 per cent¹ of the energy used in leisure centres is associated with the swimming pools. One important way that swimming pools use energy is in the pumps that operate to filter and clean the water, keeping the pool hygienic. Modern filter pumps can vary their speeds based on the amount that they are needed. A slower moving pump uses much less electricity to move the water, because at lower speeds it is much more electrically efficient. The pool pump at Pewsey Leisure Centre has been modified to work in this way.

Pewsey Library - solar photovoltaic panels

Pewsey Library was newly built and opened in 2010. It was fitted with solar panels in January 2011, allowing it to generate its own electricity using energy from the sun and reducing its requirement to take electricity from the National Grid.

Project	Annual saving (£)	Annual CO ₂ saving	Year completed	*Total savings to date (£)
Pewsey Sports Centre – variable speed drive on pool pump	£720	6 tonnes	2013	£1,440
Burbage School – lighting upgrade	£250	2 tonnes	2011	£1,250
Pewsey Library – solar pv	£200‡	2 tonnes	2011	£800

‡ Excludes Feed-in Tariff payments

*Represent estimated full year savings since completion

Other projects

Collaborative low carbon schools service

The Collaborative Low Carbon Schools Service was a programme developed by the Carbon Trust to support local authorities and schools to work together to achieve effective school carbon management. Wiltshire Council worked in partnership with ten local schools to help reduce their carbon emissions and energy costs.

The following schools in the Pewsey Area Board area were selected to work on a pilot project in 2011/12.

- Burbage Primary School
- Oare Primary School
- Pewsey Primary School

¹ Carbon Trust figure

- Pewsey Vale Secondary
- Woodborough Primary School
- Rushall Primary School

Each school had an energy audit undertaken and a series of behavioural, low cost and invest-to-save opportunities were recommended to save energy. Simple measures such as labelling and switching off lights and equipment were shown to be successful in reducing energy use and got the whole school involved.

Woodborough Primary School has been awarded the Eco Schools Green Flag award in recognition of its work on sustainability projects.

Biomass boiler programme

Between 2013 and 2014 the council invested in an ambitious programme of biomass boiler installations. These have predominantly taken place in schools which were previously heated by oil. In total thirteen buildings have been converted.

Oxenwood Outdoor Education was one of the corporate buildings to benefit. The new boiler runs on wood fuel pellets. This fuel is sustainably sourced in the UK, thereby contributing to local energy resilience and carbon reduction.

The installation is also generating income through the government's 'Renewable Heat Incentive' which pays a tariff back to the council for the next 20 years of operation.

Other local initiatives

Pewsey Environmental Action Team (PEAT)

PEAT consists of a group of like-minded residents in and around the Pewsey Vale who feel passionate about environmental issues and who are actively engaging to mitigate climate change. Their interests and activities encompass a range of issues including; composting and food, energy, transport, waste and water.

In April 2014, PEAT organised the successful Pewsey Vale Green Open Homes weekend, with funding from the Centre for Sustainable Energy. The event aimed to encourage local people to find out more about the renewable energy options available to them, and provide them with the opportunity to chat to home and business owners about the advantages of installing low carbon technologies and discuss any challenges that they might need to consider before proceeding. In total, 11 local home-owners opened their doors to the public to showcase a range of technologies including solar pv, solar thermal, wind, biomass, heat pump and an electric car.

www.peatonline.org.uk/main/index.shtml

Brighter Futures Radiotherapy appeal



Although our appeal has yet to be launched publicly, please find below some information about how your involvement or donation will help make a difference to local people with a cancer diagnosis in Swindon and Wiltshire.

Each year hundreds of patients travel an average of 2,500 miles to receive essential Radiotherapy treatment. At one of the most vulnerable times in their lives they make this journey away from their support networks. When the appeal is launched, we hope to raise more than £2.5 million in order to build a Radiotherapy facility in Swindon.

Why support us?

For too long local people in need of radiotherapy have had to make the long journey to Oxford for treatment. Typically this means up to 40 trips to Oxford over the course of one to seven weeks. Not only does this mean patients having to endure long journeys at a time when they are unwell, it also means spending precious time travelling, rather than with loved ones.

Last year in Swindon (2013) over 3,000 people were told the devastating news they had cancer. This is eight people every day.

In 2013/14, a total of 669 patients from the Swindon area travelled to Oxford University Hospital to receive radiotherapy. This equates to 10,043 journeys of 70 miles.

This is our once in a lifetime chance to support the biggest improvement in cancer care Swindon has seen in a generation. If it was our own loved ones, we'd want the best care available, as close to home as possible. This is a fantastic opportunity to support your local healthcare services and anyone who needs treatment now and in the years to come. Let's make it happen once and for all.

Brighter Futures, the charity for Great Western Hospitals NHS Foundation Trust, will shortly begin a Capital Fundraising appeal in order to provide the equipment needed for a new Radiotherapy Centre on Great Western Hospital site in Swindon. This is a partnership with Oxford University Hospital who will build the facility at a cost of £14 million.

Your donation will go into a Radiotherapy appeal account and the funds donated will be used to purchase 2 Linear Accelerators, the equipment required to provide local people with a radiotherapy centre in Swindon.

It is likely that we will launch our appeal publicly in spring 2015 however we are seeking expressions of interest from members of the public and organisations now in the hope that this new facility can become a reality. Plans are to open the centre by Spring 2017.

To find out more about Brighter Futures and you can get involved in the Radiotherapy appeal, please contact us on 01793 605631 or email fundraising@gwh.nhs.uk





A legacy for Wiltshire

What we delivered in 2014 and what's coming up in 2015...



Building a legacy...

- Since 2012 the Legacy Steering Board has focused on;
 - Boosting the local economy
 - Encouraging people to get active and healthy
 - Bringing communities together
 - Supporting Wiltshire's future Olympians and Paralympians

What we delivered in 2014

- 4 Wealth of Wiltshire fayres – supporting 80 small businesses
- Organised EXPO event in Chippenham – 115 businesses exhibited – 500+ attendees
- Organised health fairs and checks at area boards
- Promoted the Big Pledge – Dementia campaign launched – all 18 community areas signed up
- Organised Cycle Wiltshire
- Tour of Britain – through 4 communities – 5,000 schoolchildren lined the route
- Supported The Big Walk in Melksham – raised £3,800 for charities

What we delivered in 2014

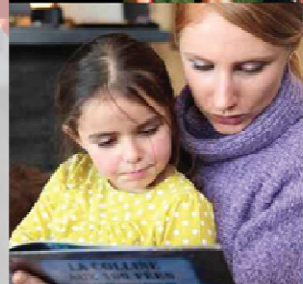
- First World War county-wide commemoration – Tidworth over 1,000 attendees
- First World War – Wall of Remembrance created and touring the county
- Support for Wiltshire's future Olympians and Paralympians
- Inaugural business and sports dinner raised £30,000
- Brought business and sport together
- Foundation fund for future funding and scholarship schemes established - supported 24 local sports stars

What's coming up in 2015?

- Business and sports dinner - 26 March
- The Big Pledge - launch May
- Cycling festival – w/c 3 May
- Cycle Wiltshire – 9 and 10 May
- Magna Carta – 800 years anniversary – 15 June
- Walking festival – w/c 6 September
- The Big Walk – 12 September

Magna Carta – what's happening?

- 800th anniversary in 2015
- 1215 – the Magna Carta (also known as the Great Charter) was sealed
- Copy presented to Wiltshire - housed in Salisbury Cathedral
- 2015 - national anniversary - want local communities at the heart of activities
- Community areas invited to take part in a modern day pageant – from Salisbury Market Square to the Cathedral Close on 15 June
- The procession is opportunity to showcase each area and its heritage as a float, giant, theatre production etc...
- Plus create a modern day Magna Carta (charter)
- And flags to reflect this...



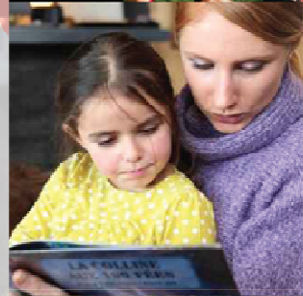
A legacy for us all...

- Communities that come together are stronger and more vibrant
- Improves our wellbeing and creates a place that we belong to
- We can help - through area boards and community area managers
- Tool kit available with ideas, how to's and templates
- Lots happening in 2015
- What will you be doing as a community?



A legacy for us all...

Welcome your questions....



Pewsey Community Area Board

March 2015



1. Neighbourhood Policing

Team Sgt: Clare Wallace

Pewsey West Team

Beat Manager – PC Richard Barratt

PCSO –

Pewsey East Team

Beat Manager – PC Teresa Herbert

PCSO – Jonathan Mills

2. NPTs - Current Priorities & Consultation Opportunities:

Up-to-date details about Neighbourhood Policing Teams including team membership, current priorities and forthcoming community consultation events can be found on our Wiltshire Police Website.

□ Visit the website at: www.wiltshire.police.uk

3. Police and Crime Commissioner: Mr Angus Macpherson

PCC website: www.wiltshire-pcc.gov.uk

4. Performance and Other Local Issues

I am not able to be present at the Area Board on the 16th March. I have asked Sergeant Clare Wallace to represent Wiltshire Police at the meeting. Clare will give an overview of police activity since the last Area Board so I have kept my report brief, concentrating on those significant matters that have been reported to Police. All figures are taken from the last Area Board (12th Jan) to 3rd March 2015.

Burglaries

In the late part of January and early February the areas of Stype, Great Bedwyn and Wootton Rivers were targeted for burglaries. 6 were recorded and all bar one were non-dwelling related. The objects sought appeared to be gardening equipment. No entry was made to the house that was targeted however there were marks around the lock on the door.

Violence Offences

7 offences of violence have been recorded. 3 of these matters relate to children and two are welfare concerns that we are working on in conjunction with Social Services. Only one offence relates to the Pewsey Village night time economy and a male has been charged to court for the offence of assault.

Thefts

A number of thefts have been reported to us including the theft of a squirrel cage from a garden, to two large planters removed from the entrance to a village. Despite the lower prices of heating oil there have been three reports of theft of domestic fuel oil from tanks.

ASB

A review of ASB indicates the alleged incidents have been focused on individuals' not public space ASB.

Criminal Damage

Across the Pewsey Area three windows have been damaged, seemingly with objects thrown at them. There has also been damage reported to two vehicles. One parked on the street and the other at Great Bedwyn Railway Station. Whether this was intentional or caused by another vehicle parking or leaving is unknown.

Sadly damage was also caused to property inside a church in Burbage

Vehicle offences

Property has been stolen from 3 insecure vehicles and handbags from stolen from under the seats by smashing windows in 3 vehicles parked and secured.

Crime Statistics

EC Pewsey NPT	Crime				Detections*	
	12 Months to February 2014	12 Months to February 2015	Volume Change	% Change	12 Months to February 2014	12 Months to February 2015
Victim Based Crime	426	370	-56	-13.1%	12%	14%
Domestic Burglary	15	14	-1	-6.7%	20%	7%
Non Domestic Burglary	94	61	-33	-35.1%	0%	3%
Vehicle Crime	82	63	-19	-23.2%	1%	13%
Criminal Damage & Arson	62	76	+14	+22.6%	6%	7%
Violence Against The Person	63	67	+4	+6.3%	51%	31%
ASB Incidents	198	194	-4	-2.0%		

I appreciate my report can give concern to a rise in crime and the chart above does show an increase in crime for Criminal damage and violence against the person. Figures are based on a rolling 12 months and to put this into context as a comparison I have looked at the same crime types for last year. (12th January 2014 to 3rd March 2014).

This comparison shows we have had 3 fewer burglaries, 3 fewer reports of ASB, 8 fewer reports of violent crime, 1 less incident of damage and 4 fewer incidents of theft.

The NPT team continue to work hard and remain grateful for your support.

Matthew Armstrong

Sector Inspector, Pewsey



**Wiltshire
Fire & Rescue
Service**

Briefing report for Amesbury; Pewsey & Tidworth Area Boards



Wiltshire Fire & Rescue Service has grouped together neighbouring fire stations into station hubs, to work more effectively and efficiently, supporting each other to improve the service we provide.

Responding to incidents:

Your Area Board's / Locality's communities immediate emergency response will be provided by staff at these stations and where necessary additional support from staff and specialist equipment from other stations.

Prevention work:

Staff from other departments also provide the community with specialist services giving fire safety and road safety advice and interventions such as talks and visits.

Protection work:

Specialist staff provide expert knowledge, give advice and undertake enforcement action working very closely with the planning authorities to keep communities safe from fire.

In an **emergency dial 999**, for other non urgent matters you can either visit our website: www.wiltsfire.gov.uk or contact the following people:

	<u>Manager / Department</u>	<u>Telephone</u>	<u>email</u>
Operational matters	Station Manager - Jason Underwood, Amesbury, Pewsey, Ludgershall Station Hub	07515 191951	jason.underwood@wiltsfire.gov.uk
Partnership and community engagement issues	Michael Franklin (Wiltshire Council Area)	07919 306037	mike.franklin@wiltsfire.gov.uk
Home fire safety visits and for talks and visits	Community safety department	0800 389 7849	www.wiltsfire.gov.uk and then complete the on line request

Warning given over dangers of chip pans

Last year, over half of all accidental fires in the home in England were linked to cooking. Many of these were caused by deep fat frying, and over 3,000 people are injured in these kinds of fires each year.

Deep frying requires heating a large volume of oil to extremely high temperatures. The oil can cause terrible burns, and it can go up in flames. In fact, it's an ideal fuel for a fire and, as such, it's difficult to put out. Homemade chips are great, but the safest way to deep fry is to use a thermostat controlled deep fat fryer rather than a chip pan, as the thermostat stops it from overheating - or, even better, use oven chips!"

Top tips for cooking are:

- Never fill a chip pan more than a third full of oil.
- Take care when cooking with oil - it sets alight easily.
- If the oil starts to smoke, it's too hot. Turn off the heat and leave it to cool.
- Ideally, use a thermostat controlled deep fat fryer, which can't overheat.
- Don't leave cooking unattended - a forgotten pan can lead to disaster.
- If you've consumed alcohol, don't be tempted to cook with a chip pan.
- Avoid children being in the kitchen alone when cooking on the hob.

If a pan does catch fire:

- Don't take any risks. Turn off the heat if it is safe to do so but don't try and move the pan.
 - NEVER throw water over the fire - that will cause a fireball.
- Don't tackle the fire yourself - get out, stay out, call 999.

Fire precept set for coming year

Wiltshire and Swindon Combined Fire Authority has agreed to increase its band D fire precept by 1.98% for the coming year.

At a meeting today (12 February), members adopted a net revenue budget of £24,606,900 for 2015/16 - which includes a £357,300 contribution from general reserves. This represents a 0.8% reduction in budget from 2014/15.

This 1.98% increase means that the payment for the Fire & Rescue Service by an average band D household in Wiltshire and Swindon will rise to £64.88 - an increase of £1.26 for the year.

The fire precept equates to a weekly cost of £1.25 to Band D homes to provide Wiltshire Fire & Rescue Service.

Michael Franklin

Partnerships & Community Engagement Manager(Wiltshire Council area)

March 2015

This page is intentionally left blank

January update 2015

A single Children's Community Health Service for Wiltshire

Children's Community Health Services consist of fourteen different services for children:

- Health Visiting Service
- Family Nurse Partnership
- School Nursing and National Child Measurement programme
- School-aged immunisation programme
- Children's Learning Disability Nursing
- Integrated Occupational Therapy and Physiotherapy
- Speech and Language Therapy
- Children's Community Nursing
- Community Paediatrics
- Community Paediatric Audiology (West Wiltshire only)
- Safeguarding Named Nurses
- Looked After Children
- Portage (Salisbury area only)
- Child Health Information Service (CHIS)

In Wiltshire, these services are currently delivered by five separate organisations.

As a result of listening to, consulting and involving service users, it has been determined that services and support for the county's children and young people can be improved by delivering services via a single contract.

Wiltshire CCG, Wiltshire Council and NHS England are jointly re-commissioning the services to create a single Children's Community Health Service for Wiltshire. It will mean that every child, young person and family across the county, no matter where they live, will have access to the same and all services and support. Services will be easier to access and there will be a potential for improved joint work with GPs, Wiltshire Council and other partners.

Service users have been extensively involved in developing the new service. Children and young people and parent and carers have been at the heart of consultation and engagement, working alongside professionals in shaping Wiltshire's new Children's Community Health Service. As well as public events on the service, there have been a series of meetings, workshops, focus groups and on-line surveys.

The new improved service will be in place from March 2016. The tendering process is currently underway.

Royal United Hospital, Bath acquires the Royal National Hospital for Rheumatic Diseases

The proposed acquisition of the Royal National Hospital for Rheumatic Diseases NHS Foundation Trust (RNHRD) by the Royal United Hospital Bath NHS Foundation Trust (RUH) has now been approved, health sector regulator Monitor announced.

Joint working with the RUH will secure the future of the renowned specialist services of the RNHRD and allow patients in the area and beyond to continue to access world class care and expertise. The acquisition takes place on 1 February 2015.

The RNHRD endoscopy service is the only clinical service to move to the RUH on 1 February. Combining the endoscopy services will give patients access to greater choice of appointments and the assurance of nationally accredited standards of care.

Patients, GPs and other relevant partners have already been engaged with and informed of this change.

All other RNHRD clinical services will continue to be provided from the RNHRD hospital and patients will be seen and treated by the same team of staff.

Specialist Dementia Care

NHS Wiltshire CCG and Wiltshire Council are currently running a public consultation, through Healthwatch Wiltshire, on the future location of where specialist dementia hospital care in Wiltshire will be delivered.

Specialist dementia care is currently being temporarily provided at Amblescroft South in Salisbury and has been provided there since the closure of Charter House, Trowbridge in February 2013. There are also additional beds available in Swindon and Bath and this provision will continue.

The consultation is asking the public to share their views on the three locations that have been put forward for a permanent place for specialist dementia care to be provided from, and the three possible locations are: Charter House, Trowbridge; Avebury Ward at Green Lane Hospital, Devizes; and Amblescroft South, Foundation Way, Salisbury.

The public consultation started on 1 December 2014 and is running until 10 March 2015.

More information on the consultation can be found on Healthwatch Wiltshire's website:

<http://www.healthwatchwiltshire.co.uk/consultation-specialist-dementia-care>

Integrated Community Teams

Wiltshire's pioneering Neighbourhood Teams, who were set up across the county to deliver community health care, are now developing even further and, in conjunction with Great Western Hospital and Wiltshire Council are transforming into 20 Integrated Teams, providing health and social care services to the population of Wiltshire.

The aim of the teams is to deliver community health and social care in an integrated, seamless way - a total care environment in the community where the patient lives, supporting them to continue to live at home, or stay locally for as long as possible without having to go into hospital.

The integrated teams will be GP led, with each team serving a population of approximately 20,000 people. Each team consists of primary healthcare workers and community care people from the NHS, Council and other agencies.

Three pilot sites have already been set up in Bradford-on-Avon, Salisbury City and Calne, and the remaining 17 teams hope to be operational by the end of September 2015.

This page is intentionally left blank



Update for Area Boards - February 2015

Focusing on Dementia

One of Healthwatch Wiltshire's (HWW) top priorities is dementia. This is because of what local people told us when we attended the 'what matters to you' events which were hosted by Community Area Partnerships and Area Boards in 2014. We have been working with local charities in Wiltshire to monitor the new Wiltshire dementia strategy. We are working with Alzheimer's Support, Alzheimer's Society, Age UK Wiltshire, Age UK Salisbury and District, Carer Support Wiltshire and Swan Advocacy.

We have held workshops across the county, where local people have been invited to share their experiences of local dementia services. Over 120 people participated in the workshops. People were also given the opportunity to take part in a one-to-one interview with a member of HWW staff or a trained volunteer. HWW is collating all the feedback and putting together a report of the findings to date. Further workshops are scheduled for later in the year, where we will continue to gather feedback. Please do get in touch with HWW if you would like to participate in the workshops.

Consultation on Specialist Dementia Hospital Care in Wiltshire

NHS Wiltshire Clinical Commissioning Group (CCG) is consulting on the permanent location of specialist dementia hospital care. To help them make a decision about where this care should be, they want to hear what local people think. HWW has been independently facilitating the consultation. This has involved public meetings, talking to people in service user groups, inviting people to complete a questionnaire, and encouraging people to talk to us and tell us what they think.

HWW has now held all of the dementia consultation events, and is currently in the process of pulling together all of the feedback into a report. This report will be widely available for everyone to read and help with the decision making process, ensuring that people's voices are heard. The report will be available around the 17 March 2015. If you would like a copy then please contact us.

Wiltshire's Better Care Plan

HWW want to make sure that health and social care services for older people in Wiltshire are working well for them, their unpaid carers and their families. We are speaking to older people and their unpaid carers about their journey through the health and care system and encouraging them to share their experiences. We want to understand whether they, their families and unpaid carers are involved as much as they wanted to be in decisions about their care.

This is all part of Wiltshire's Better Care Plan which is designed to put patients at the centre of their care, provide care closer to home, prevent avoidable hospital admissions, and ensure patients can leave hospital as soon as they are well enough to either return home or continue their care in another setting. Wiltshire Council and NHS Wiltshire Clinical Commissioning Group have agreed to work together to achieve all this. More information about Better Care can be found here: <http://www.wiltshire.gov.uk/better-care-plan-summary.pdf>

Contact us:

Tel 01225 434218

info@healthwatchwiltshire.co.uk

www.healthwatchwiltshire.co.uk

HWW will be collecting together all the feedback it receives about people's experiences and reporting this back to local people, commissioners, and providers of services.

This page is intentionally left blank

Update for Pewsey Area Board

Update from	PCAP (Pewsey Community Area Partnership)
Date of Area Board Meeting	16 th March 2015

Headlines/Key Issues

- Spice Time Credits – Launch event at Pewsey Primary School now organised for 12th March, aimed at parents and highlighting volunteer opportunities at PEAT, Dementia Friends and Pewsey Primary School.

- Pewsey – Devizes Bus Consultation – Alan James is now working on a pilot with the Public Transport Unit in Wiltshire Council. Further activities are planned.

- Pewsey Vale Tourism Partnership – Business Event on 20th March at the Pewsey Heritage Centre from 5pm to 7pm with Claire Perry at 5.30pm to consult with local businesses and get their input to and generate interest in the PVTP. PVTP will continue as a sub-group of PCAP for the time-being, but on the understanding that it will become self-sufficient. NWD SDF funding achieved for the Business Event, website and logo work.

- Pewsey Vale Dementia Awareness Group – Very positive meeting at the beginning of February where the Pewsey practice attended and agreed to be involved in this initiative. A memory club is planned for Pewsey.

- Highways Meetings – Generally good progress on drainage work and road maintenance. New, longer term plans should improve communications as they will be less reactive. Impact of new budget reductions is not yet clear.

- Parish Issues – A meeting on the Great Stones Way is planned for 23rd March with Friends of the Ridgeway, Wiltshire Council and impacted Parish Councils.

- National Grid & NWD AONB – PCAP attended the Technical Meeting on 3rd March for the removal of pylons between Burbage and Pewsey.

- Just Play Football Sessions – Following implementation in many other community areas, Caroline and PCAP are surveying the Pewsey CA to see whether people would like this in their parishes/villages and if so, when.

- Learning in Wiltshire – a meeting is planned for 27th April to meet with Learning in Wiltshire to find opportunities for delivery of adult education locally to Pewsey.

This page is intentionally left blank

Update for Pewsey Area Board

Update from	North Newnton Parish Council
Date of Area Board Meeting	16 th March 2015

Headlines/Key Issues

- Community Defibrillator went “live” in December and is sited at Hilcott Village Hall. Thanks to PAB for their contribution and to all for their support and donations. We are now looking at purchasing the telephone box at the Woodbridge Inn with a view to installing a second defib to serve that part of the community
-

- Parish Flood Plan is now completed and approved.
-

-

-

This page is intentionally left blank

Update for Pewsey Area Board

Update from	Woodborough Parish Council
Date of Area Board Meeting	16 th March 2015

Headlines/Key Issues

- The recent grant made for the resolution of alleged privacy issues in Smithy Lane vis a vis the field path has now been spent, and the resulting measures taken to restore the privacy of residents in the lower part of Smithy Lane have been implemented in accordance with their wishes. WPC is grateful for the grant.
-

- WPC thanks the CATG for agreeing to assess formally the possible implementation of a footpath on the C261 in the vicinity of the Smithy Lane crossroads.
-

-

-

This page is intentionally left blank

Update for Pewsey Area Board

Update from	Wilcot and Huish (with Oare) Parish Council
Date of Area Board Meeting	16 th March 2015

Headlines/Key Issues

- **Camp site at the Golden Swan, Wilcot.**
Although there have been no complaints during the winter months it is anticipated that the warmer weather and the Easter holiday will see the camp site being used again. A considerable number of complaints were received last year regarding excess noise at the camp site during the summer months. These were passed to Wiltshire Council's Enforcement Officer and the Environmental Protection Officer. The Parish Council are concerned that no action has been taken and nothing has changed and that complaints will continue this summer about noise caused by excessive numbers of pitches and campers. Concern that the rules regarding camping are being broken. Concern that the growth of the camp site constitutes a change of use of the land and is contrary to a Conservation Area and AONB.

- **The Canal at Wilcot**
There have been no further complaints to the Parish Council of anti-social behaviour during the winter months, however complaints are still being received about damage to the verge on the road alongside the canal as boaters vehicles are parked on the verge. The Parish Council continues to attend the meetings organised by the Canal and River Trust.

- **The lane to the rear of the village green, Wilcot**
Residents have complained about the condition of the lane which has prevented access by refuse collection vehicles on several occasions. It is an unadopted lane but has a public right of way over it, so it is proving difficult to define who is responsible for its maintenance.

- **There have been no further accidents at Cross Hayes crossroads, to the Parish Councils knowledge, and it is hoped that this problem has now been resolved by the replacement of missing road signs.**

This page is intentionally left blank

Army Basing Briefing for Amesbury, Pewsey, Tidworth and Warminster Area Boards - March 2015

Background

The government's Army basing announcement in March 2013 advised of approximately 4,300 extra Service personnel moving to Wiltshire, who will be accompanied by their families, bringing the total number of additional people to 7,600. These plans will require additional levels of infrastructure and services to be provided by Wiltshire Council.

March 2015 Update

- The planning applications covering the **priority works** within the Army camps at Bulford, Larkhill and Perham Down are being received as scheduled and are available for viewing on the Wiltshire Council Planning Portal.
- Planning applications for the **Service Family Accommodation (SFA)** at Bulford and Ludgershall are imminent, with one for Larkhill likely to be received in late April or early May. Plans of the SFA layouts were presented by the Defence Infrastructure Organisation (DIO) to Wiltshire Councillors, town and parish councillors immediately before being exhibited at Durrington, Amesbury and Tidworth libraries (and also at Ludgershall). The plans were made available for public comment at these exhibitions and on a DIO Website, the closing date for which was 20 February 2015.
- The plans for the **redevelopment within the camps** are expected to be submitted in late spring to the end of 2015. The main build programme is expected to commence mid-2016. Priority works within Army camps at Perham Down, Larkhill and Bulford are expected to start late 2015. **Traffic Impact Assessments** and an overarching **Travel Plan** covering the totality of MOD's Salisbury Plain training estate will be submitted with each planning application for SFA and proposed development within Army camps. These will set out the projected changes in vehicular activity together with road improvements and other measures to mitigate their effects. Under the Travel Plan, the Army is encouraging service personnel to make greater use of sustainable travel arrangements. Key to this, is the DIO's intention to locate Army homes close to bases and develop pedestrian / cycle links between them.
- Wiltshire Council continues to work with the MOD on the provision of the necessary **community infrastructure** such as new schools, early years provision, road improvements, open space, health facilities, emergency services facility requirements and waste, as well as the extent of ecological mitigation measures to be implemented. These will be finalised as planning applications are considered. The MOD, like all other developers, is subject to normal planning considerations.

(Briefed in September 2014 - but repeated for reference if required)

Location and Number of Net Additional Personnel Arising from Army Basing

<i>Location</i>	<i>SLA Pop</i>	<i>SFA Population</i>			<i>Total</i>
		<i>Military</i>	<i>Spouses</i>	<i>Children</i>	
<i>Larkhill</i>	<i>1,513</i>	<i>540</i>	<i>540</i>	<i>982</i>	<i>3,575</i>
<i>Bulford</i>	<i>494</i>	<i>241</i>	<i>241</i>	<i>427</i>	<i>1,403</i>
<i>Tidworth and Ludgershall</i>	<i>836</i>	<i>400</i>	<i>400</i>	<i>725</i>	<i>2,361</i>
<i>Upavon</i>	<i>254</i>	<i>0</i>	<i>0</i>	<i>0</i>	<i>254</i>
<i>Total</i>	<i>3,097</i>	<i>1,181</i>	<i>1,181</i>	<i>2,134</i>	<i>7,593</i>

Meeting Notes and Recommendations to Pewsey Area Board 16 March 2015

COMMUNITY AREA TRANSPORT GROUP MEETING HELD ON WEDNESDAY 4 February 2015

Attendees

Jerry Kunkler – Pewsey Area Board
Terry Eyles – Pewsey Parish Council
Colin Gale – Rushall Parish Council
Peter Deck – Pewsey Parish Council
Patrick Wilson – Pewsey and District
Chamber of Commerce
Dawn Wilson – Wilcot and Huish Parish
Council
Steve Colling – Burbage Parish Council
Mac Mclean, North Newton Parish Council
Kristian Price – Wiltshire Council

Paul Oatway – Pewsey Area Board
Caroline Brailey – Wiltshire Council
Mark Stansby – Wiltshire Council
John Brewin – Woodborough Parish Council
Carolyn Whistler – North Newton Parish
Council
Richard Netherclift – Manningford Parish
Council
David Proto – Manningford Parish Council
Mike Hyslop – Grafton Parish Council
Teresa Herbert – Pewsey NPT

1. Apologies

Apologies received from Spencer Drinkwater, Wiltshire Council

2. Review of C38 (+ request for replacement sign) The review is with the legal team ready for the advert which will hopefully be published soon. Regarding the replacement sign Mark reported that there are triangular warning signs for the junction on each approach and they have replaced the sign that Carolyn had said was taken down and not replaced. They are smaller but it is a 40 so fit for the purpose to give warning of the junction. Mark's view is that it is adequately signed. Carolyn agreed not to pursue further.

3. Budget – The cost of the work at Bedwyn Bridges has jumped significantly from £17k to £38,500 due to the need to relocate electrical and BT infrastructure to accommodate the new path plus fees to pay for network rail to do assessments – this scheme is funded by LSTF and not coming out of the CATG pot. The second phase at Upavon Grey Flags is a firm estimate of just over £5,000 whereas CATG committed £14,000 so there will be a big underspend which will go back into the budget. The current CATG balance is at £32,349.14. Any underspend will be rolled over into the next financial year. Mark is anticipating the same budget next financial year. Mark invited the group to consider if there are any roads that should be prioritised for next year – a list is being prepared by Highways but it isn't ready yet. There was a six year plan sent round with the 14/15 list. After some discussion it was agreed to accept the priorities as set by Highways.

4. SID / CSW - The SID Letter from Cllr Thomson was circulated with the agenda. The advice from Caroline is to wait until Cllr Thomson has carried out further research on whether it might be possible for parishes to pay to be involved in the scheme.

5. 20 mph limit Requests – Results of the countywide survey are imminent. The results will be shared via email once they are ready and can then be discussed at the next meeting.

6. Active Priority List Updates

- a. Issue No. 72 – Pedestrian Access to Pewsey Station (raised 17/7/09) – No news on this – the Parish Council support it. The detailed design and estimate was due to be completed by now.
- b. Issue No. 1964 – Footpath, Grey Flags, Upavon (raised 13/10/11) – In a position to start construction, all legal works have been done, land dedication is complete. Work is due to start 23 March and will be a 2 week project under 2 way signal control.
- c. Issue No 2874 – Pedestrian Safety, Rail & Canal Bridge, Great Bedwyn (raised 19/03/13) – Construction is programmed for 9th March – daytime road closure between 9.30 and 3.30 for ten working days.
- d. Issue No 3342 – Bus Waiting area, Wilcot (raised 11/04/14) – Order placed – but due to the need to get Great Bedwyn done this financial year Wilcot slipped a bit, works should commence 20/4 and take less than a week. There might be 2 way lights.
- e. Issue No 91 – Footpath A342 Rushall (Elm Row) (raised 03/08/09) – Mark needs to organise a site meeting. Not a build for this year but will arrange a meeting soon. Action Mark to organise
- f. Issue no 3238 – Completion of footway from Old Barnyard to Church lane, Rushall (raised 07/02/14) – Colin said they don't want it to go around corner. To take it forward and firm up costing to dig some trial holes which cost £450. Proposed Dawn and seconded by Patrick. All in favour – **Recommendation to Pewsey Area Board for approval of £450 towards this.**
- g. Issue No 535 – Traffic using C52 (Manningford) as a rat run (raised 02/11/09) This was agreed to be looked at as a potential project in 15/16 financial year therefore there is no progress to report. Richard felt that the road closure during summer will give chance for the banks to recover from when Pewsey Vale Coaches decamped at the farm for a while. The C52 has unwanted 'man made' passing places due to the traffic. He was very keen for it to be noted that if the road is every resurfaced that these unofficial lay-bys are not included. They are not part of the road.
- h. Crossing, Goddard Road, Pewsey – Design funded from LSTF but no money to build it. There hasn't any consultation yet. Drawings were circulated. There is general support for a zebra crossing but businesses might be affected due to control zone (zig zags) i.e. no loading can take place within that zone. The Indian Takeaway may see that as disadvantage; however it will protect access to Woottons Yard. Patrick reported that buses often cut across junction to pull into their stop. Mark said if there is a curb they won't be able to. Pewsey Parish Council would do the consultation. Wilts and Dorset should also be included in the consultation. The approximate cost are:- construction £21k, lighting assessment £1,500 topo survey £1,800 legal fees £2,000 stage 2 and 3 road safety audit £2,500, total £28,800. This was always seen as a possible bid for substantive funds, but there is money in the pot. **Action Mark to send copy of plan to Parish Council who will consult residents and businesses. Recommend to the area board to add to the priority list.**

7. Pewsey Highways Issues

ID	Raised	Division	Summary of issue/scheme	Latest update
2885	29/03/14	Pewsey	Speeding on Wilcot Road nr Schools	The School warning sign has been moved, Agreed to recommend that the Area Board close this issue
2945	03/02/14	Pewsey	Speeding through Easton Royal	See below

<p>All signs have now been installed, Mark reported that the signing is all correct. It is down to enforcement now. It is a 30 mph limit. The repeater signs have been checked and double checked –CSW checks are being done and results are quite high – when the road was a 40 the limit was complied with but since it reduced to 30 there are issues –it looks like a straight stretch, people haven't got used to it. Teresa reported that it is a cause for concern here and Milton Lilbourne, Many go through at mid 40's which is high – and she isn't seeing a reduction – they don't have the capacity to get there as often as they would like. It is a community safety issue. The perpetrators vary between locals and out of area –motorists assume it is 40. There have been some serious accidents at Milton junction. Teresa will continue to support CSW. It was agreed to keep this open as an issue and continue to monitor. A possible option for the future could be a chicane. It is a police priority.</p>				
3169	28/11/13	Pewsey Vale	Traffic from Devizes regularly overshoots the Rushall junction	All works done, although give way lines will be refreshed. It was agreed to recommend to the Area Board that this issue be closed.
3302	27/07/12	Pewsey Vale	Dangerous Junction Cross Hayes Wilcot	See below
<p>Dawn reported that the nearest home owner is not fond of raised rumble strips as this will be a noise issue for him. Most accidents are from Manningford direction. They could be skidding even though high grip surface. It needs regular sweeping, the road is getting clean again, it is a vast improvement to what it was. Mark confirmed that it can't be a stop it is a give way, can only be stop if reduced visibility. People are using this route as a short cut and they are in a hurry. If accidents happen now it is careless driving as all the signs are there. They should be taken to extent of law for careless driving. It was agreed to keep monitoring it. The BT Box is in the wrong place, it was felt it could get damaged quite soon.</p>				
3489	18/07/14	Pewsey Vale	Request for Horse Warning Signs, Alton	Action Mark to liaise with PC (area board approved £150)
3547	20/08/14	Burbage and The Bedwyns	Request for 30mph limit at Durley Burbage	See below
<p>Metro Count cannot be installed as they are not permitted in 60mph limits – Parish advised to contact NPT about speed monitoring. This was discussed at the CATG meeting on 15 October and the highways officer agreed to make a site visit to see if there could be any signage improvements – letter received from resident with photographs. Teresa reported on the accident, where the driver was arrested and charged with a S4 road traffic act offence. He was drink driving, it was similar another time, where the driver was under the influence of drugs and was prosecuted. Teresa was concerned that it is a60 through here, with no footpaths, and is a rat run, Teresa would support anything that would improve safety here. Handheld speed gun can only be done in areas of 50mph or less. The road connects the A4 to Burbage and south to A345 to Salisbury and people use it to avoid Marlborough at peak times. It is fast and open – a driver can see for miles and then suddenly finds himself in a tight lane. It was felt that there is a need for a sign before Durley at Savernake Hotel (junction on right) it is a fast corner . People would like to see a 30. Mark said that there are a few properties here but it is not dense enough to meet 30 criteria and may not meet the criteria for a 40 mph limit. Other injury collisions were reported in Durley. When analysing the collision data base, Highways discard those reports of incidents when drivers are found to be under the influence of drugs or alcohol as no engineering work can prevent these situations from occurring. Mark has been to look at the area but struggled to identify any obvious hazards to justify warning signs. There were very few cars around but Steve Colling said that mornings and evenings and when it gets dark are when volume increases. There is an ice warning sign situated to the north of the hamlet. Mark felt that village name plates and gateway features might be more appropriate and that a speed limit review is very costly and probably won't bring the outcome that they want. CATG could support</p>				

<p>gates. The guidelines for a 30 is 20 properties directly fronting the road. A 50 wouldn't make a difference. Action Mark to arrange for a speed survey and then he will make a recommendation based on the results. Dawn suggested a sign saying it is an accident blackspot.</p>				
3676	23/10/14	Pewsey Vale	Pavement in North Newton	See below
<p>The request is for a pavement on North Newton road from Woodborough towards Upavon and Rushall. The parish highlighted that there are 47 houses with planning for 14 more. There is a lot of traffic and although it is a 40 there are some faster cars, and numerous accidents on Park Road and Rushall Road junctions. To access the bus stop on Upavon Road there are no pavements and there is an aging population, it is dangerous to walk to catch bus. A resident in Park Road is 83 yrs old with limited vision. A member of the group asked if S106 could be used. Mac said that this was for a playground but there is nowhere to put a playground. Mark needs to do a site survey, might need land designation and it needs a proper feasibility study. If the group want to prioritise for next year then he will be able to do a free one, unless a topo is needed. It was proposed and seconded with all in favour that this scheme be added to the priority list. Peter encouraged the parish to have another look at potential planning gain i.e. CIL which is for infrastructure. Recommend to the area board to add to the priority list.</p>				
3723	20/11/14	Pewsey Vale	Request for pavement on C261 Broad Street Woodborough	See below
<p>Many school pupils walk from the village with a parent sometimes also sibling and buggy, some cycle, lots by car this matter was not raised by parents, but by local residents. Request is for a footpath for the congested length leading to Smithy Lane crossroads. There is a problem with children walking to the crossroads, also the C261 is often rutted, and is now quite deep, children get wet. Traffic speeds at school time are about 20-25mph, but there is lots of congestion and parking. A pavement would provide safety. Paul Oatway supports the request as it fits in with the wider and evolving way forward for Woodborough. There is a flow of people walking down to school. Mark has had an initial look. There are some engineering challenges, Broad Street – road goes right to the hedge, there is nowhere to build a footway and another section has a series of telegraph poles supporting electric, possibly also BT. Visibility isn't great and already a pinch point and there is a bollard. It was agreed to add this to the priority list for Mark to do a feasibility study. Recommend to the area board to add to the priority list.</p>				
3731	26/11/14	Burbage and The Bedwyns	Dropped kerb at The Knapp Great Bedwyn	See below
<p>Mark has looked at the location and a drawing was circulated. This was a request from the parish council and also an occupational therapist. A dropped curb would assist many residents. The cost is approx £750 – it was proposed seconded and all in favour. Recommend to the area board to approve the project and budget of £750</p>				
3744	02/12/14	Burbage and The Bedwyns	Request for 40mph in Marten (C195)	See below
<p>The parish council originally applied for a 30 mph but this was turned down. They now believe it might be eligible for a 40. As the density requirement is half that required for a 30 – there are 12 houses and 15 children under 12, there are two school buses, no footpaths, no lighting. The parish representative explained that at the entrances into the village it comes in from 60 and there is nothing to slow people. People have wheelie bin signs asking people to reduce speed, the houses front the main road. Residents approached the Parish Council for help. Mark said that some signs were replaced last year from the A338 where the speed limit reduced to 50, but</p>				

<p>Mike said the turning left into Marten road is 60 which doesn't make sense. When this was last raised with a request for a 30 Mark said that it didn't meet the criteria, but suggested gateways as an option, this was dismissed. He explained that there could be a review of the route if the group wants to pursue this. He looked back to when the original list of C roads came out and CATG prioritised. This route wasn't on the first phase or second phase – it is 14th on the list that was given. At least 50% of the route falls within the Tidworth CA. Teresa agreed that it is fast road. This is the only part of that route where there is density of housing. Action Mark to arrange a metro count to measure speed and he will make a recommendation based on the results.</p>				
3804	19/01/15	Pewsey Vale	Request for school warning lights at Chirton	See below
<p>This is a similar problem to Woodborough, there is lots of traffic at school times – there are a series of bends before the School coming from Patney, the parish council are concerned about the potential for a collision and would like advance warning that there is a school and is school crossing time. Chirton have doubled their school intake. It is not a rat run so most likely local road users. Mark said that the manual says where there are approach speeds then they can consider the lights over and above warning triangles which are already in place. The threshold speeds are 35mph and above. A speed survey was carried out in 2010 and the 85% was 30.4. It therefore doesn't meet the criteria for school warning lights. Mark will however inspect the signs Action Mark. Paul would report back to the Parish Council. Action Paul.</p>				
3805	19/01/15	Pewsey Vale	Request for double white lines A342 Chirton	See below
<p>Mark reported that it is not appropriate to put isolated sections of double white lines in if can't treat the whole route as motorists get the wrong impression of where it is safe to overtake. There is nothing wrong with people going round if somebody is turning in. Paul not aware of any major collision, nor Teresa. The limit was reduced to 40mph. It was agreed to recommend that the area board close this issue.</p>				
3818	23/01/15	Burbage and The Bedwys	Request for traffic calming or speed limit at junction at Leigh Hill Burbage	See below
<p>The junction is a track type road with no houses. Issue is for people turning out of the track onto the main road. It is a fast road with double white lines. The road speed limit has already been assessed. The track is owned by Savernake Estate. Steve will provide more information to Mark on the issue. Action Steve Colling</p>				

3228 is closed (request for repeater signs) but Easton Royal parish council have raised it with PCAP who canvass parish councils for any issues that they need support with. This has been investigated by highways and the signage is correct.

3816 was a late issue from Burbage who are requesting the 30 signs be moved going into Burbage from the Bypass. They have white gates but the sign isn't next to them. Mark said if there was a speed limit review done here there is no guarantee that the 30 should start where the gates are, he said there are lots of examples of where gates are before the limit. Sometimes they are deliberately placed in front of the sign. In Upavon they couldn't put them where the limit was due to the illustration on the signs. CATG could commit money for a review, but the review might say the limit is in the right place and it would cost £1000 to £1500. Instead they could have a sign that says Welcome to Burbage please drive carefully. **Action Steve to take back to parish council**

3817 was a late issue from Burbage re speeding past junction Katherine's Church Burbage

It was felt that visibility here is very good, if anyone is waiting to turn if on main route you would see them. Mark can't see that there is any issue and doesn't recommend any action. **It was agreed to recommend to the area board that this issue be closed.**

8. Any Other Business Yellow lines on Broomcroft Road. Mark has had a look and said the developer hasn't completed lining yet as somebody was parked there. There is a place where there is a new surface which has gone over some of the lining so it needs the contractor back to finish. Mark has been twice and regarding the issue of parking further up the road he didn't think there was a particular issue. He agreed that drivers have to concentrate when turning out of Avonleaze. He doesn't consider it dangerous but will monitor.

9. Date of next meeting – 15 April 2015 2pm Pewsey Parish Office.

10. Recommendations to Pewsey Area Board

Issue no 3238 – Completion of footway from Old Barnyard to Church lane, Rushall
Recommendation to Pewsey Area Board for approval of £450 towards trial holes.

Crossing, Goddard Road, Pewsey - **Recommend to the area board to add to the priority list.**

Issue no 2885 – Speeding on Wilcot Road Nr Schools – the school warning sign has been moved
Recommend to the area board to close this issue.

Issue 3169 – Traffic from Devizes regularly overshoots the Rushall junction. Works are now all done **Recommend to the area board to close this issue.**

Issue 3676 – Request for pavement on North Newton Road from Woodborough towards Upavon
Recommend to the area board to add to the priority list.

Issue 3723 – Request for pavement on C261 Broad Street, Woodborough. **Recommend to the area board to add to the priority list.**

Issue 3731 – Request for dropped kerb at The Knapp, Great Bedwyn. **Recommend to the area board to approve and budget of £750**

Issue 3805 – Request for double white lines A342 Chirton **Recommend to the area board to close this issue.**

Issue 3817 – Speeding past junction Katherine's Church Burbage. **Recommend to the area board to close this issue**

Report Author: Caroline Brailey, Pewsey Community Area Manager
Tel No: 01225 718609
E-Mail: caroline.brailey@wiltshire.gov.uk